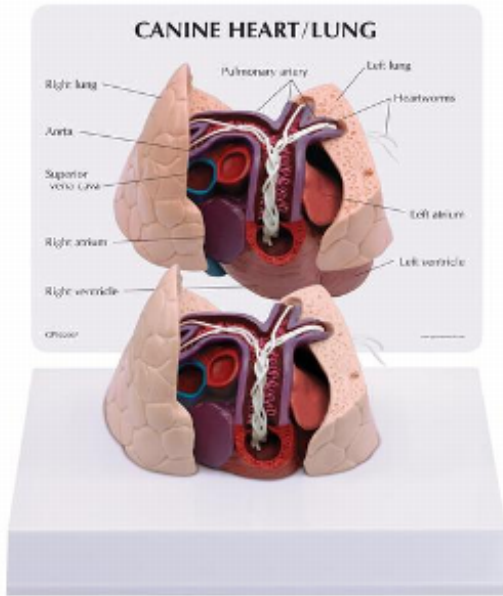


## Canine Heart and Lung Model

### Product Information



Weight  
Item No.

0.4 kg  
W33376 [1019586]

### Description

Canine Heart and Lung Model. Average canine heart and lungs infested with heartworms (*dirofilaria immitis*). Cut-away view demonstrates structures in the heart (right ventricle, pulmonary trunk, pulmonary arteries, and lungs) where adult-stage heartworms are normally found.