

Composition:	100% Polyester
Weight:	Face: 350 gsm +/- 5%
Width:	140cm (55")
Flammability:	BS5852 Part 2 Ignition Source 5 CAL TB 116 and 117, NFPA 260 (USA) EN1021-1/2 Marine Standard IMO A.652 (16)
Abrasion Resistance:	45,000 Martindale rubs 60,000 Wyzenbeek DR
Waterproof:	Hydrostatic head >1 metre
Colour Fastness to Rubbing:	BS EN ISO 105: X12: 2002 Dry > 4-5 Wet > 4-5
Additional:	Anti-microbial and Anti-fungal with a stain resistant finish
Recommended Cleaning:	Clean and care for the fabric on a regular basis and it will maintain its condition and appearance. Most stains can be removed by wiping clean. Microfibre cloths are extremely effective without soap, which is helpful as soap can clog your fabric. <ul style="list-style-type: none"> • Vacuum and wipe clean regularly with a damp cloth (microfibre recommended) and water to remove dust particles and prevent build up of soiling. • Take care not to cause abrasive damage. • Remove spillages promptly with an absorbent dry cloth. • For heavier soiling, use a mild proprietary cleaner and warm water ensuring that cleaning product residues are removed as this inhibits the stain repellent • For infection control purposes, staining should be removed promptly (within 15 minutes) with COLD water and then cleaned as above. A 5% bleach solution, Haz Tabs or Chlor Clean may be used. • Water and oil based stains may be removed by using most water based house proprietary spray cleaning agents, following the instructions carefully and removing all soap residues. • Do not apply other chemicals/stain removers. • Do not machine wash, fully immerse or dry clean.
Continuity:	Although every effort is made to ensure that fabrics ordered match the colours in this pattern card, slight variations may occur from batch to batch.

Please note Panaz reserve the right to update product specification at their discretion.



Certificate No: 2358



Innovation in contract fabrics

For further information please visit



BS5852
CRIB 5
EN1021/2



BV 0062

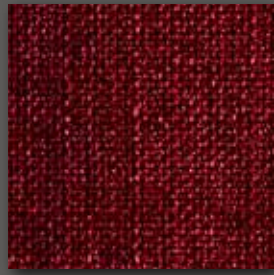


Collection
Highland
TO IGNITION SOURCE 5

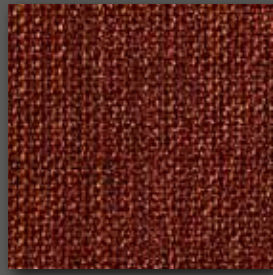
Unit 6/7, Block 4, Ashbourne Business Park, Co Meath t: 01 835 2411 e: orders@medguard.ie



Highland
817 Chestnut



Highland
400 Red



Highland
408 Terracotta



Highland
402 Orange



Highland
644 Cerise



Highland
624 Mulberry



Highland
405 Crimson



Highland
609 Rose



Highland
412 Purple



Highland
642 Thistle



Highland
807 Mushroom



Highland
905 Dove



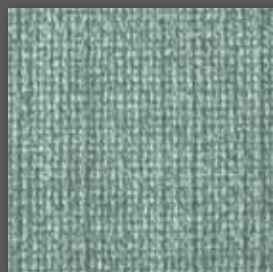
Highland
226 Lime



Highland
116 Navy



Highland
129 Ocean



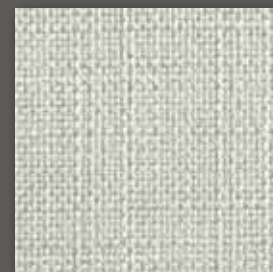
Highland
134 Sky



Highland
703 Mink



Highland
313 Yellow



Highland
805 Cream



Highland
823 Chablis



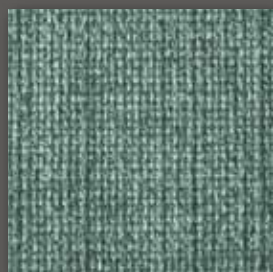
Highland
208 Fern Green



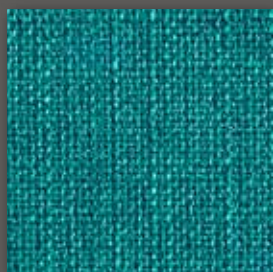
Highland
903 Charcoal



Highland
911 Steel



Highland
131 Azure



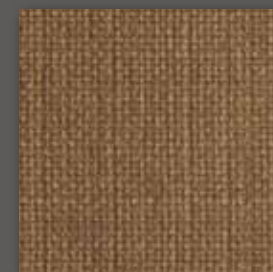
Highland
201 Jade



Highland
836 Sand



Highland
321 Wheat



Highland
841 Biscotti



Highland
231 Olive