



M82

## EYE Examination Simulator (3 steps)

M82A

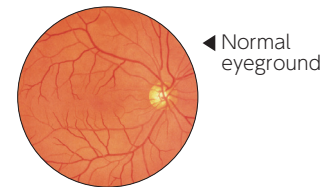
## EYE Examination Simulator (2 steps)

### Practical fundus examination simulator with 10 clinical images and variations.

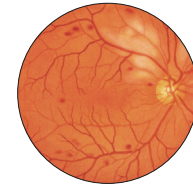
An innovative trainer for fundus examination compatible with actual ophthalmoscope  
Various cases can be set using a combination of slides, depth variations and pupil diameter

#### Product Supervision

Japan Society for Medical Education  
Working Group with the cooperation of:  
Kansai Medical University Department of Ophthalmology



◀ Normal  
eyeground



◀ Hypertensive  
retinopathy

#### FEATURES

- 1 | 10 fundus slide cases of common eye diseases
- 2 | Real clinical images
- 3 | Lens-equipped eyeball units that simulate the visual axis of the human eye
- 4 | Soft and supple material, making the raising of the eyelid realistic
- 5 | Adjustable depth of the fundus slides: hyperopic, normal, and myopic views.
- 6 | Red reflex can be detected
- 7 | Different sizes of pupil can be set at 3 steps in M82, 2 steps in M82A

#### SKILLS

- | Fundus examination with real ophthalmoscope

#### CASES

- | Normal fundus
- | Hypertensive retinopathy:
  - Grade 3 arteriolar vasoconstriction
  - Grade 1 arteriolosclerosis
  - hemorrhages and cotton wool spots
  - simple vein concealment
- | Diabetic retinopathy:
  - microaneurysm, hemorrhages and hard exudates
- | Papilloedema (chronic phase)
- | Papilloedema (acute phase)
- | Glaucomatous optic atrophy:
  - glaucomatous optic disc cupping and nerve fiber defect
- | Retinal vein occlusion (acute phase):
  - flame-shaped hemorrhage and cotton wool spots
- | Retinal vein occlusion (post retinal laser photocoagulation)
- | Toxoplasmosis: retinochoroiditis
- | Age-related macular degeneration:
  - macular exudates and subretinal hemorrhage

※M82A includes two normal fundus slides.

#### DESCRIPTIONS

👍 For product codes of the alternate skin tone versions of this model, please refer to [www.kyotokagaku.com](http://www.kyotokagaku.com).

#### SPECIFICATIONS

Size: W42 x D22 x H39 cm / W16.5 x D8.7 x H15.4 inch Weight: 2kg / 4.4lbs

#### SET INCLUDES

1 manikin head and shoulder	1 set of case slides(10 cases)
- 3 steps (2, 3.5, 5 mm dia.) *M82	1 slide duster
- 2 steps (3.5, 8mm dia.) *M82A	1 storage case
1 - 1 slide holder with 3 steps depth setting	1 instruction manual

#### MATERIALS

\*Latex is included in the blower

#### REPLACEMENT PARTS

11220-010 1 set of replacement fundus case slides (10 cases)

\* ophthalmoscope is not included.