

MW10



# Cardiology Patient Simulator "K" II

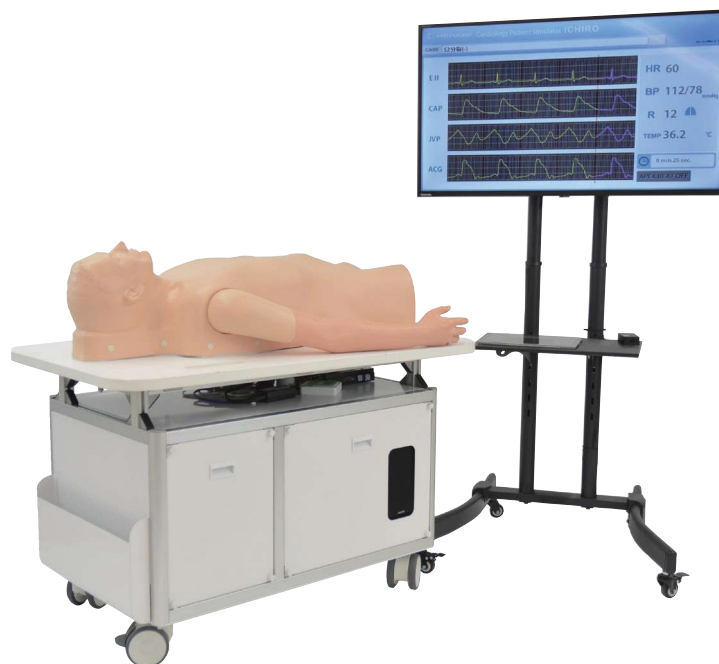
## Hone your senses and skills for bedside cardiology

See, listen, and feel.

The cardiology patient simulator K II provides comprehensive hands-on training in cardiology and its complications.

### Product Supervision:

Japanese Educational Clinical Cardiology Society,  
Toshio Amano, Masaya Kino, Takaharu Saito, Tsunekazu Takashina



### CASES

(MODE 1) Comprehensive patient simulation with sounds, pulses, apex beats and ECG

No.	Normal heart simulation (12 cases)	No.	Heart disease simulation (14 cases)	No.	Arrhythmia (10 cases)
A-01	S2 split (-) HR: 60	B-01	aortic stenosis	C-01	sinus arrhythmia
A-02	S1 split (+)	B-02	mitral regurgitation	C-02	sinus tachycardia
A-03	S2 split (+)	B-03	mitral stenosis	C-03	sinus bradycardia
A-04	S2 wide split	B-04	aortic regurgitation	C-04	ventricular premature contraction (1)
A-05	S3 gallop	B-05	hypertrophic cardiomyopathy	C-05	ventricular premature contraction (2)
A-06	S4 gallop	B-06	mitral steno-regurgitation	C-06	ventricular premature contraction (3)
A-07	pulmonic ejection sound	B-07	pulmonic valvular stenosis	C-07	sino-atrial block
A-08	S3 and S4 gallop	B-08	atrial septal defect	C-08	atrio-ventricular block
A-09	innocent murmur	B-09	ventricular septal defect	C-09	atrial fibrillation
A-10	midsystolic click sound	B-10	tricuspid regurgitation	C-10	atrial flutter
A-11	S2 split (-) HR: 72	B-11	acute mitral regurgitation		
A-12	S2 split (-) HR: 84	B-12	patent ductus arteriosus		
		B-13	mitral valvular prolapse		
		B-14	dilated cardiomyopathy		

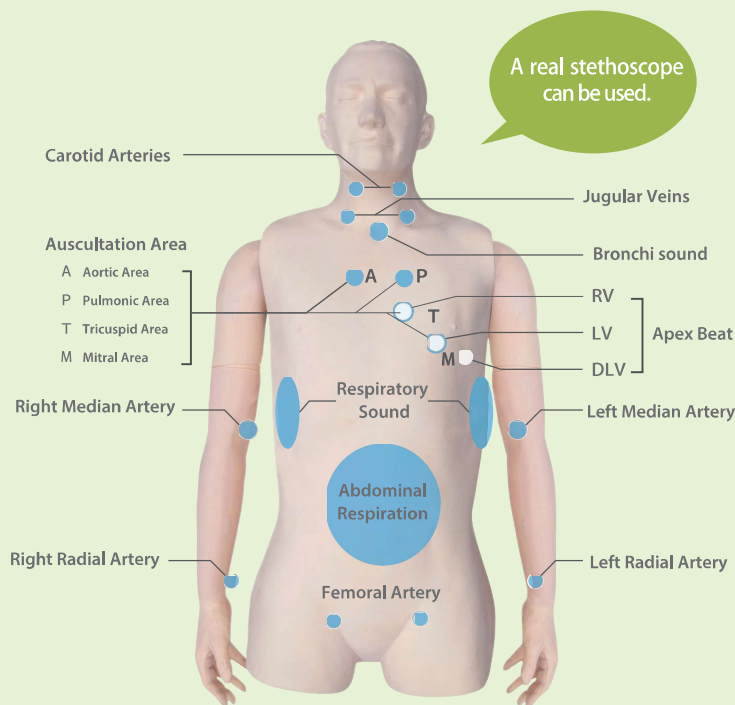
(MODE 2) Arrhythmia simulation, auscultation training with ECG

A		B		C		D	
A-01	normal sinus R	B-01	atrial flutter	C-01	VVI pacemaker	D-01	vpc (quadrigeminy)
A-02	sinus tachycardia	B-02	av block	C-02	atrial pacemaker	D-02	vpc (trigeminy)
A-03	sinus arrhythmia	B-03	av block & crbbb	C-03	vent pacemaker	D-03	vpc (bigeminy)
A-04	apc solitary	B-04	av block (digial)	C-04	av seq pacemaker	D-04	vpc (couplet)
A-05	apc bigeminy	B-05	av block (mobitz)	C-05	icrbbb	D-05	pvc (repetitive)
A-06	ectopic pacemaker	B-06	av block (mobitz)	C-06	crbbb	D-06	pvc (R-on-T type)
A-07	wondering pacemaker	B-07	av block (3:1&4:1)	C-07	clbbb	D-07	non-sustained VT
A-08	coronary sinus R	B-08	av & crbbb	C-08	clbbb	D-08	vent tachycardia
A-09	sinus bradycardia	B-09	paroxy atr tachy	C-09	clbbb (by ami)	D-09	vent flutter
A-10	ss syndrome	B-10	av unc R (svst)	C-10	wpw syndrome	D-10	vent fibrillation
A-11	atrial fibrillation	B-11	av unc R (pat)	C-11	wpw syndrome	D-11	vent R (sinus cond)
A-12	atrial flutter	B-12	av unc R	C-12	wpw syndrome	D-12	accel vent rhythm
A-13	atrial flutter fib	B-13	ac unc contraction	C-13	vpc (solitary)	D-13	agonal rhythm

## Basic Skill Training

## Physical findings of Simulator "K" II

Comprehensive Clinical Examination Training



## Heart Sounds and Murmurs

Auscultation synchronized with electrocardiograms and findings.

- differentiation of S1, S2, S3 and S4
- distinction between systolic and diastolic murmurs

## Pulse examination

Slight variations of the arterial pulse waves under different cardiac conditions or arrhythmias can be detected by pulse examination.

## Observation of Jugular Veins

The strength and timing of "α" and "V" waves vary with cases.

## Palpation of Apex Beat

Simulated RV, LV and DLV can be palpated

## Monitoring Screen

Real time dynamic charts on the screen:

- phonocardiogram
- sphygmogram (CAP/JVP/AC)
- electrocardiogram (ECG)

## Respiratory Sounds and Abdominal Movement

Respiratory cycles are represented to understand respiratory conditions.

## For Effective Training Sessions

## Up to 5 Simulators at One Time

OSCE, group session, and scenario-based simulation



Up to five cardiology simulated cases can be controlled by one wireless tablet. Ability to set different conditions in each simulator.

The system allows for:

- scenario-based training involving more than one patient.
- skills assessment sessions with different cardiovascular stations.

## Playlist System

Simulator "K" is not just for individual task training. Incorporated "Play List Maker" facilitates creation of scenario-based training sessions whose conditions vary over time.

## Playlist Maker facilitates:

- sessions with temporal change in physical findings.
- standardization of training contents among different instructors.
- saving time for preparation.

## Ready-to-use

Simple connection and all-in-one unit structure.

## Error Indicator

The error indicator performs check-up of the system to keep Simulator K in its best condition.

## DESCRIPTIONS

## SPECIFICATIONS

Size: 145 x 75 x 170 cm/57 x 30 x 70 inch

Weight: 145kg/320lbs

Power: AC100V-240V 50/60Hz

Power Consumption: 400W

## MATERIALS

Soft resin, hard resin  
Latex free

## SET INCLUDES

1	main unit with the model body	1	control PC
1	external speaker (built-in the unit)	1	rib sheet
1	PC / keyboard / mouse (built-in the unit)	1	storage cover
1	air compressor unit (built-in the unit)	4	textbooks
1	main monitor	2	instruction manuals
			-built-in help file of software operation
			-instruction manual

\* A stethoscope is not included.