

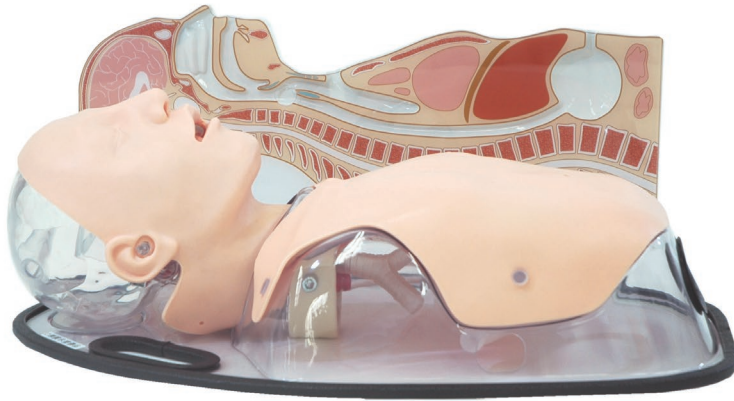
MW8

# Tube Feeding Simulator (NG, OG and PEG)



## Gastric tube management simulator to learn theories and skills

Can be used as an effective educational tool for caregivers and health care professionals  
Featuring three routes and compatible with real liquid for training



The manikin can be set in Fowler's position.

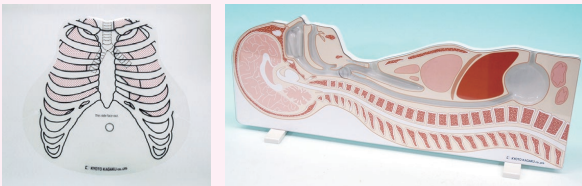
### FEATURES

- 1 | Feeding tube insertion and confirmation of the tube placement (NG/OG)
- 2 | Transparent structure which allows direct observation of progress
- 3 | and tube placement  
Cross-section panel and chest anatomy map for theoretical
- 4 | understandings  
Flexible neck to learn appropriate neck/head positioning

### SKILLS

- | Nasogastric/ oral gastric insertion, management and tube placement confirmation
- | PEG tube management
- | Physiological understanding
- | Gastric aspiration

### KEY FEATURES



To facilitate anatomical understanding, the feeding routes panel for demonstration and the chest anatomy to overlay the manikin come with the set. The panel is sold separately as MW5.



### Feeding Tube Insertion

Nasogastric and oral tube insertion



### Administration through three Routes

Actual liquid can be administered through mouth, nose and PEG tube. Medication administration techniques can also be simulated (using water).

### DESCRIPTIONS

#### SPECIFICATIONS

Size: 60 x 37 x 23 cm / 25.6 x 14.6 x 9 inch Weight: 4.4kg/9.7lbs

#### SET INCLUDES

1 male torso	1 tube feeding routes panel
1 support base	1 chest sheet
1 drain tube	1 instruction manual
1 funnel	1 lubricant
1 plastic cup	

#### REPLACEMENT PARTS

11384-030	1 face mask
11386-000-01	drain hose
11386-000-02	tube feeding chest sheet
11392-070	band of face skin
11229-050	1 lubricant

#### RECOMMENDED DEVICES

Nasal catheter: 14fr