

ri-scope[®] LED

high performance for life



Medguard Professional Healthcare

Tel: +353 (0) 1 835 2411

Email: sales@medguard.ie

Fax: 01 969 5009

Website: www.medguard.ie

Unit 6/7, Block 4, Ashbourne Business Park, Ashbourne, Co. Meath, A84 VK52

CONTENT

PRODUCT CHARACTERISTICS	03-05
ri-scope® OTOSCOPES	06
ACCESSORIES	07-09
ri-scope® OPHTHALMOSCOPIES	10-11
RETINOSCOPIES	12
DERMATOSCOPIES	13
E.N.T. INSTRUMENTS	14-17
POWER SOURCES HANDLES	18-19
ri-former® WALL DIAGNOSTIC STATION	20
ri-scope® SETS	21-27

ri-scope® LED PREMIUM HAND HELD LED DIAGNOSTIC INSTRUMENTS.

Consistent light output of white and bright LED over service life of battery for more efficient diagnosis. The new LED / Li-ion technology resulting in more reliable instruments due to significantly longer service life of batteries and LEDs.

green efficiency

- More efficient diagnosis by natural LED.
- Low maintenance cost thanks to long LED and battery service lives.



High-Performance LED illumination – bright light with a nearly unlimited lifetime!

- Available for all **ri-scope® L** instruments and dermatoscopes, except retinoscopes.
- Maintenance-free High-Performance LED technology.
- CRI > 90, colour temperature 4.000 Kelvin.
- Lifetime 100.000 hours compared to 20-30 hours of halogen / xenon lamps.

Lithium-Ion batteries – light-weight and durable .

- 50 hours operational lifecycle of LED with fully charged Li-Ion battery.
- Rechargeable battery lifetime: up to 1.200 charging cycles.

rheotronic® – electronic light intensity adjustment for LEDs and light bulbs

- 100% light output after short switch activation.
- Continuously variable light adjustment.
- Automatic safety shut-down after 180 seconds.

Renowned high performance optics

Otoscopies

- Glass optics with high depth of focus and precise 3-times magnification up to the image margin.
- Reflection minimized, consistent illumination.
- Fiberoptics provide highest light efficiency.

Ophthalmoscopes

- Dust-proof.
- Aspherical condenser lens.
- Coaxial observational and illuminational light beams .
- Reflection-reduced view even with small pupils.

ri-scope® LED

LIGHT AND PERFORMANCE LIKE NEVER BEFORE



Lithium-ion battery – The power plus.

Memory effect and self-discharge are no match: the lightweight lithium-ion battery used in the **ri-scope® L** has an unsurpassed lifetime – with higher loading capacity and sustained high-power performance, even after well over 1.000 charge cycles.



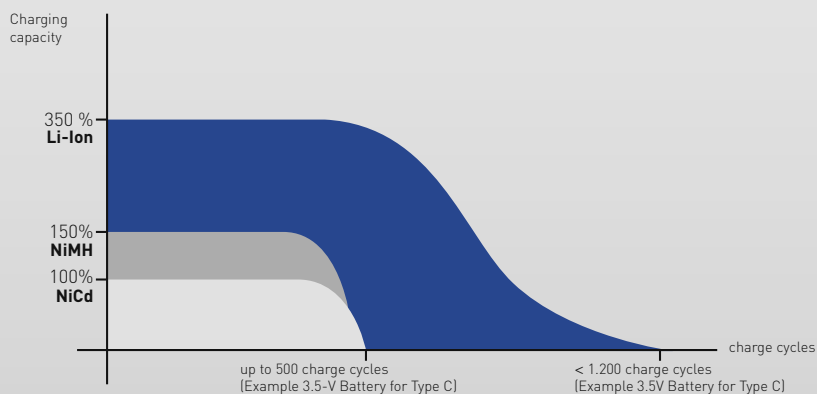
LED technology – performance for life.

Next Generation LED Illumination – Performance for life.

Available in **ri-scope® L** instruments and **ri-former®** modular wall stations.

Nearly unlimited lifetime with the highest luminosity: these advantages make the LED technology used with the **ri-scope® L** so unique. Moreover, the lamp inside the **ri-scope® L** never gets hot, provides true-colour and even illumination of the area under examination and is practically guaranteed never to fail, in contrast to conventional halogen or xenon lamps.

- Maintenance-free High-Performance LED technology - low running cost.
- CRI > 90, colour temperature 4.000 Kelvin - excellent colour rendering close to natural daylight conditions for more efficient diagnosis.
- LED's aligned with optical systems in instrument heads - homogenous light distribution across the field of view without reflections or shadows.
- Designed for optimal heat dissipation - longer lifetime and brilliant illumination over the entire lifespan of the LED (100.000 hrs).
- High energy efficiency - three-times longer operation time than with conventional XL illumination.



CENTREPIECES OF THE ri-scope® PIONEERING ADVANTAGES

LED illumination

For uniform illumination of the examination field with pure white light (4.000 K). The LED illumination shows colours as they really are. Helpful for efficient diagnostics plus an almost unlimited service life.



green efficiency

- Low maintenance costs thanks to long LED and battery service lives. Whilst the service life of a xenon light source is only approx. 20 hours, LED burns up to 100.000 hours, i.e. more than 3 years at a go.

Its optimum values in all these fields make the **ri-scope®** a pioneering hand-held instrument for flexible diagnosis.

Battery service lives



Bulb service lives



ri-scope® L OTOSCOPES

PREMIUM OTOSCOPES WITH GLASS OPTICS AND LED / LI-ION TECHNOLOGY

ri-scope® L1

The inexpensive basic model with reduced-reflection, direct illumination (without specula ejection device)

without anti-theft device
XL 2.5 V **No. 10562**
XL 3.5 V **No. 10563**

with anti-theft device
XL 3.5 V **No. 10563-301**

- Direct illumination with 2.5 V xenon, or 3.5 V xenon lamp.
- Bi-directional swivelling optical glass with 3-fold magnification, optional available with operation lens with 4-fold magnification.
- Metal fitting for **e-scope®** / **ri-mini®** / **pen-scope®** specula, compatible with specula by other well-known manufacturers.
- Suitable for pneumatic tests (supplied without ball).
- Large selection of power sources: handy and stable handles, practical chargers and well-conceived diagnostic stations.

ri-scope® L2

The inexpensive F.O. model with 2.5 V/3.5 V xenon or 3.5 V LED lights (without specula ejection device).

without anti-theft device
XL 2.5 V **No. 10564**
XL 3.5 V **No. 10580**
LED 3.5 V **No. 10565**

with anti-theft device
XL 3.5 V **No. 10580-301**
LED 3.5 V **No. 10565-301**

- Fiberoptics for optimal beaming and transmission of the light.
- Bi-directional swivelling, sealing optical glass with 3-fold magnification.
- Optional operation lens with 4-fold magnification available.
- Metal fitting for **e-scope®** / **ri-mini®** / **pen-scope®** specula, compatible with specula by other well-known manufacturers.
- With integrated F.O. throat illuminator
- Suitable for pneumatic tests (supplied without ball)
- Large selection of power sources: handy and stable handles, practical chargers and well-conceived diagnostic stations

ri-scope® L3

The high-end F.O. version with 2.5 V/3.5 V Xenon or 3.5 V LED illumination, specula ejection device and operation lens.

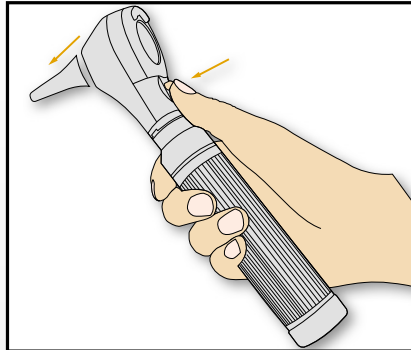
without anti-theft device
XL 2.5 V **No. 10566**
XL 3.5 V **No. 10581**
LED 3.5 V **No. 10567**

with anti-theft device
XL 3.5 V **No. 10581-301**
LED 3.5 V **No. 10567-301**

- Fiberoptics for optimal beaming and transmission of the light.
- Bi-directional swivelling optical glass with 3-fold magnification.
- Operation lens with 4-fold magnification and glass mini optic ease the insertion of instruments.
- With integrated F.O. throat illuminator
- Easy-to-operate **SpecEjec®** specula ejection device at the rear side of the otoscope to avoid contamination.
- Fitting for **ri-scope®** specula and enlarged conduit for instruments.
- Suitable for pneumatic tests (supplied without ball).
- Large selection of power sources: handy and stable handles, practical chargers and well-conceived diagnostic stations.

ri-scope® L

OTOSCOPE



The SpecEjec® device enables touchless ejection of used ear specula for hygienic and simplified handling.



SIMPLE HANDLING SPECULAS FOR ri-scope®

Reusable specula for L1/L2

- Selection of different sizes: 2 mm, 2.5 mm, 3 mm, 4 mm und 5 mm.
- Made of black plastic.
- Each speculum is labelled by size.
- Sterilization at 134°C / 273.2 F for 10 minutes in steam sterilizer or disinfection by conventional means possible.
- Delivered in a poly bag.

2.0 mm/10 items
No. 10775

2.5 mm/10 items
No. 10779

3 mm/10 items
No. 10783

4 mm/10 items
No. 10789

5 mm/10 items
No. 10795





Disposable specula for L1/L2

- For single use.
- An especially hygienic option for the prevention of cross-contamination.
- Made of black plastic.
- Delivered in a poly bag.

2 mm

No. 10772-532 100 items
No. 10773-532 500 items
No. 10774-532 1000 items

2.5 mm

No. 10772-531 100 items
No. 10773-531 500 items
No. 10774-531 1000 items

3 mm

No. 10772-533 100 items
No. 10773-533 500 items
No. 10774-533 1000 items

4 mm

No. 10772-534 100 items
No. 10773-534 500 items
No. 10774-534 1000 items

5 mm

No. 10772-535 100 items
No. 10773-535 500 items
No. 10774-535 1000 items



Reusable specula for L3

- Specially developed for use with the SpecEjec® option, absolutely reliable handling.
- The 9-mm speculum is suitable for use as a nasal speculum.
- Selection of different sizes: 2 mm, 3 mm, 4 mm, 5 mm und 9 mm.
- Delivered in a poly bag.
- Each speculum is labelled by size.
- For repeat use.
- Sterilization at 134°C / 273.2 F C for 10 minutes in steam sterilizer or disinfection by conventional means possible.
- Made of black plastic.

2 mm/10items

No. 10800-532

3 mm/10items

No. 10800-533

4 mm/10items

No. 10800-534

5 mm/10items

No. 10800-535

9 mm/10items

No. 10800-539

ri-scope® L

ACCESSORIES



Disposable specula for L3

- For single use.
- An especially hygienic option for the prevention of cross-contamination.
- Made of black plastic.
- Delivered in a poly bag.

2 mm

No. 10801-532 100 items
No. 10802-532 500 items
No. 10803-532 1000 items

3 mm

No. 10801-533 100 items
No. 10802-533 500 items
No. 10803-533 1000 items

4 mm

No. 10801-534 100 items
No. 10802-534 500 items
No. 10803-534 1000 items

5 mm

No. 10801-535 100 items
No. 10802-535 500 items
No. 10803-535 1000 items

9 mm

No. 10801-539 100 items
No. 10802-539 500 items
No. 10803-539 1000 items

No. 11449



Operation lens

For **ri-scope® L** otoscope

- Optical Glass and small inner diameter for insertion of instruments.
- 4-fold magnification.
- with pin connector

No. 10960



Ball for pneumatic test

For all **Riester** otoscopes.

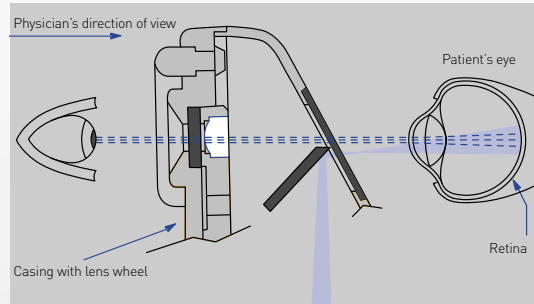
- for the diagnosis of disorders of the middle ear.
- The ear drum can be examined optimally for by producing pressure.
- no connector included because side-release buckle is integrated into otoscope.



ri-scope® L OPHTHALMOSCOPES PRODUCT RANGE

Optical path

Corneal and iris reflexes are avoided by separation of the parallel observation and illumination beams (Gull strand's principle). The illuminated retinal area is fully visible – even with narrow pupils. Optimum conditions are achieved for ophthalmological examinations.



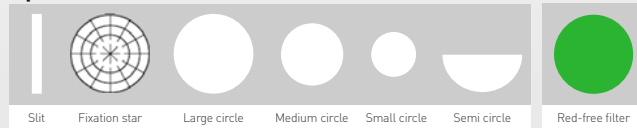
Dioptre disc

Corrective lenses L1/L2 Corrective lenses L3

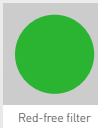
D+ 1-10 | 12 | 15 | 20 | 40
D- 1-10 | 15 | 20 | 25 | 30 | 35

D+ 1- 45 in single steps
D- 1- 44 in single steps

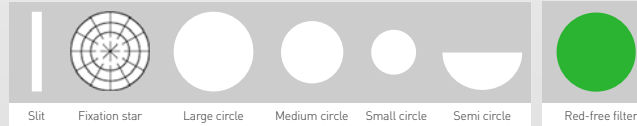
Apertures L1



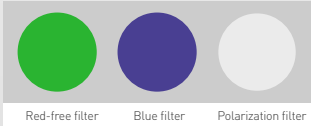
Filters



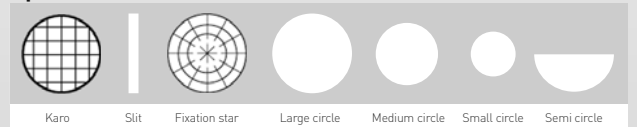
Apertures L2



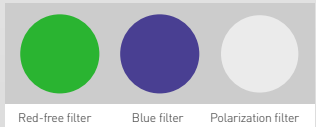
Filters



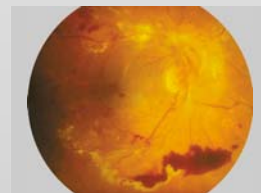
Apertures L3



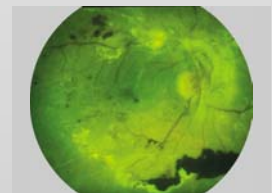
Filters



Healthy fundus



Pathological fundus



Fundus with red free filter

ri-scope® L OPHTHALMOSCOPES

Premium-Class Direct Ophthalmoscope with renowned high-performance optics and LED / Li-Ion technology.

ri-scope® L1

The inexpensive basic model with all the important basic functions.

without anti-theft device
XL 2.5 V **No. 10568**
XL 3.5 V **No. 10569**
LED 3.5 V **No. 10569-203**

- Dioptre wheel with 29 corrective lenses Plus 1-10, 12, 15, 20, 40
Minus 1-10, 15, 20, 25, 30, 35
- Easy-to-operate aperture hand-wheel with semi-circle, Small/medium/large circle fixation star, slit and red-free filter with contrast-enhancing effect.
- Includes filter wheel engageable for all apertures with symbol display, red-free filter.
- Optimized high-performance optics with aspherical condenser lens.
- Parallel beam path.
- Dust-proof.
- Large selection of power sources: handy and stable handles, practical chargers and well-conceived diagnostic stations.

with anti-theft device
XL 3.5 V **No. 10569-301**
LED 3.5 V **No. 10594-301**

ri-scope® L2

The enhanced basic model with separately engageable red-free, blue and polarization filters for each aperture.

without anti-theft device
XL 2.5 V **No. 10570**
XL 3.5 V **No. 10571**
LED 3.5 V **No. 10571-203**

- Dioptre wheel with 29 corrective lenses Plus 1-10, 12, 15, 20, 40
Minus 1-10, 15, 20, 25, 30, 35
- Easy-to-operate aperture hand-wheel with semi-circle, small/medium/large circle, fixation star, and slit.
- Includes filter wheel engageable for all apertures with symbol display, red-free filter, blue filter and polarization filter.
- Optimized high-performance optics with aspherical condenser lens.
- Parallel beam path.
- Dust-proof.
- Large selection of power sources: handy and stable handles, practical chargers and well-conceived diagnostic stations

with anti-theft device
XL 3.5 V **No. 10571-301**
LED 3.5 V **No. 10595-301**

ri-scope® L3

The maximized model with additional focussing device and 89 single-step dioptre values.

without anti-theft device
XL 2.5 V **No. 10572**
XL 3.5 V **No. 10573**
LED 3.5 V **No. 10573-203**

- Corrective lenses for 89 dioptre values Plus 1-45 in single steps, Minus 1-44 in single steps.
- Easy-to-operate aperture hand-wheel with semi-circle, small/medium/large circle, fixation star, slit and grid.
- Includes filter wheel engageable for all apertures with symbol display, red-free filter, blue filter and polarization filter.
- Focussing device with zero retention force for the quick correction of ametropias.
- Dust-proof.
- Large selection of power sources: handy and stable handles, practical chargers and well-conceived diagnostic stations.

with anti-theft device
XL 3.5 V **No. 10573-301**
LED 3.5 V **No. 10596-301**

ri-scope® L
OPHTHALMOSCOPES

ri-scope® RETINOSCOPES PRODUCT RANGE

ri-scope® retinoscope (skiascope)

Slit
without anti-theft device
HL 2.5 V **No. 10543**
XL 3.5 V **No. 10544**

with anti-theft device
XL 3.5 V **No. 10544-301**

Spot
without anti-theft device
HL 2.5 V **No. 10545**
XL 3.5 V **No. 10546**

with anti-theft device
XL 3.5 V **No. 10546-301**

- The **ri-scope®** retinoscope (skiascope) measures the refractive power of the eye. Refractive flaws, such as near- and far-sightedness, as well as astigmatism can be detected and diagnosed.

- With XL 3.5 V xenon lamp or HL 2.5 V halogen lamp.

- Two models are available:

- The spot-light retinoscope projects a circular light beam.

- The slit-light retinoscope with a light beam in the form of a line, simplifies detection and diagnosis of astigmatic refractive flaws.

The reflex in the form of a line is moved vertically to the axis across the pupils of the patient with a slight oscillating movement. A shadow moves in the same or opposite direction.

Co-movement (plus lines): The patient is far-sighted.

Counter-movement (minus lines): The patient is nearsighted.

- Easy to operate with knurled thumb screw. The line and spot image can be focussed with the controls and turned 360°, angle read-out displayed on the integrated scale.

- Holder for hanging and placement of the fixation card into position for dynamic retinoscopy.

- Delivered with two fixation cards. The patient's eye can adjust optimally to the distance to the retinoscope.

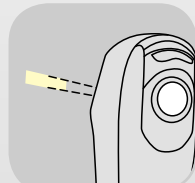
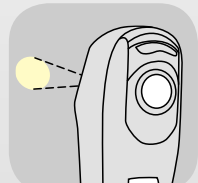
- Integrated eyeglass protection.

- Bayonet fitting for quick and secure attachment to the handle.

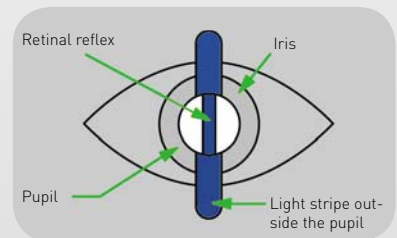
- Dust-proof, very sturdy and light casing made of impact-resistant ABS plastic.

- Bulbs can be quickly replaced at the base of the instrument head.

- Large selection of power sources: handy and stable handles, practical chargers and well-conceived diagnostic stations.



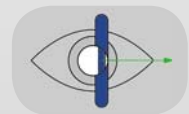
The **ri-scope®** retinoscope (skiascope) is available with circular light beam or light beam in the form of a line.



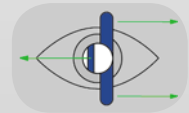
The slit and spot image can be turned 360° with the knurled thumb screw. The respective angle read-out is displayed directly on the scale.

The fixation cards may be placed on the holder and be attached.

Co-movement
Far-sightedness



Counter- movement
Near-sightedness



Line outside the
axis
Astigmatism



ri-scope® L
RETINOSCOPE

ri-scope® DERMATOSCOPES PRODUCT RANGE

ri-derma dermatoscopes

without anti-theft device
 XL 2.5 V **No. 10550**
 XL 3.5 V **No. 10551**
 LED 3.5 V **No. 10577**

with anti-theft device
 XL 3.5 V **No. 10551-301**
 LED 3.5 V **No. 10577-301**

Dermatoscopic oil
 Four 12.5 ml glass vials
No. 10970

Today skin cancer is a commonly occurring disease, which can often be diagnosed and treated at an early stage. The **ri-derma** dermatoscope offers physicians and specialists a reliable method of dermatoscopic screening and early identification of malignant melanomas. Proven epiluminescence microscopy allows melanocytic and non-melanocytic structures to be distinguished and enables precise observation of changes in skin pigmentation.

- Illumination of the examination field with 3.5 V LED illumination and/or 2.5 V XL xenon illumination resembles natural daylight.
- 10-fold magnification of the structure of the skin with focussing, achromatic lens.
- Two different skin-friendly and sterilizable contact plates are available:
 - with scale from 0 – 10 mm for exact measurement of pigmented skin lesions,
 - without scale.
- Bulbs can be quickly replaced at the base of the instrument head.
- Stable casing of black chrome-plated metal, dustproof.
- Practical eyeglass protection.
- Bayonet fitting for quick and secure attachment of the instrument head to the handle.
- Large selection of power sources: handy and stable handles, practical chargers and well-conceived diagnostic stations.
- Large selection of **ri-derma** sets at especially attractive prices.
- All of the power sources can be combined with the high-quality **Riester ri-derma** line.
- Developed and manufactured in Germany.



without scaling



with scaling 0 – 10 mm



Dermatoscopic oil



The bulb can be quickly replaced at the base of the instrument head.



Focussing device with eyeglass protection.



Bayonet fitting for securely fastening **ri-derma** to the handle.

ri-scope® L
 DERMATOSCOPES

ri-scope® E.N.T. INSTRUMENTS

Operation otoscope Human

without anti-theft device
HL 2.5 V **No. 10560**
XL 3.5 V **No. 10561**

with anti-theft device
XL 3.5 V **No. 10561-301**

- HL 2.5 V halogen or 3.5 V XL xenon lamp.
- Swivelling lens with 2.5-fold magnification.
- Adjustable speculum holder can be fixed in any position.
- Open design for unhindered use during examination and operation.
- Bayonet fitting for quick and secure attachment to the handle.
- OP otoscope made of metal and speculum holder made of impact-resistant plastic for long service life.
- Bulbs can be quickly replaced on the front of the otoscope.



Specula for ri-scope® O.P. otoscope

1 pc. 2 mm **No. 10460**
1 pc. 3 mm **No. 10461**
1 pc. 4 mm **No. 10462**
1 pc. 5 mm **No. 10463**

Nasal specula
1 pc. 9 mm **No. 10464**

- Stable and durable plastic specula with metal attachment for repeat use.
- Can be sterilized at 134° C for 10 minutes in steam sterilizer.
- Selection of different sizes: 2 mm, 3 mm, 4 mm, 5 mm and 9 mm.
- The 9-mm speculum is suitable for use as a nasal speculum.
- Each speculum is labelled by size.
- Delivered in a poly bag.



F.O. tongue blade holder

without anti-theft device
XL 2.5 V **No. 10534**
XL 3.5 V **No. 10535**
LED 3.5 V **No. 10574**

with anti-theft device
XL 3.5 V **No. 10535-301**
LED 3.5 V **No. 10574-301**

- With XL 2.5 V, XL 3.5 V xenon lamps or 3.5 V LED
- High-quality fiberoptic lightwave conductor for optimal beaming and transmission of the light. In combination with the lamp this provides cool examination light similar to daylight.
- Slide attachment for fixing and detaching wooden tongue depressors for a firm hold.
- Bayonet fitting for quick and secure attachment to the handle.
- Sturdy, very light casing made of ABS plastic for a long service life.
- Bulbs can be quickly replaced at the base of the instrument head.



F.O. nasal speculum

without anti-theft device

XL 2.5 V **No. 10536**

XL 3.5 V **No. 10537**

LED 3.5 V **No. 10575**

with anti-theft device

XL 3.5 V **No. 10537-301**

LED 3.5 V **No. 10575-301**

- With XL 2.5 V or 3.5 V xenon lamps or 3.5 V LED.
- High-quality fiberoptic lightwave conductor for optimal beaming and transmission of the light. In combination with the lamp this provides cool examination light similar to daylight.
- Swivelling and removable lens with 2.5-fold magnification.
- Slow and controlled expansion of the speculum by turning on the screw adjuster, fast expansion by pressing down on the screw adjuster.
- Bayonet fitting for quick and secure attachment to the handle.
- Impact resistant casing made of glass-fibre reinforced plastic.
- Bulbs can be quickly replaced at the base of the instrument head.



F.O. light conductor

without anti-theft device

XL 2.5 V **No. 10538**

XL 3.5 V **No. 10539**

LED 3.5 V **No. 10576**

with anti-theft device

XL 3.5 V **No. 10539-301**

LED 3.5 V **No. 10576-301**

- With XL 2.5 V or 3.5 V xenon lamps or 3.5 V LED.
- High-quality fiberoptic lightwave conductor for optimal beaming and transmission of the light. Best illumination of throat and laryngeal areas.
- Bayonet fitting for quick and secure attachment to the handle.
- Chrome-plated metal, durable and sturdy.
- Bulbs can be quickly replaced at the base of the instrument head.



Laryngeal mirrors for F.O. tongue blade holder

1 pair **No. 10447**

- Two laryngeal mirrors No. 3 (Ø 20 mm / 0.79 in) and No. 4 (Ø 22 mm / 0.87 in) for illumination and mirroring of laryngeal area.
- Easily attached to the light conductor.



ri-scope® LAMPS

Riester LED's, XL xenon and HL halogen lamps bring more light into the diagnosis. They always ensure optimal illumination of the area under examination. The latest technology provides illumination that is similar to daylight.

XL/HL 2.5 V lamps

XL 2.5 V xenon lamp
For **ri-scope®** Otoscope L1
Pack contains 6 units

No.10489



XL 2.5 V xenon lamp
For **ri-scope®** F.O. OtoscopeL2/L3,
Light conductor, nasal speculum and tongue blade
holder. Pack contains 6 units

No.10600



HL 2.5 V halogen lamp
For **ri-scope®** operation otoscope human
Pack contains 6 units

No.10602



XL 2.5 V xenon lamp
For **ri-scope®** ophthalmoscope L1/L2/L3 and
ri-derma. Pack contains 6 units

No.10605



HL 2.5 V halogen lamp
For **ri-scope®** retinoscope slit lamp
Pack contains 6 units

No.10615



HL 2.5 V halogen lamp
For **ri-scope®** retinoscope spot lamp
Pack contains 6 units

No.10620



2.5 V / 3.5 V LED / XL 3.5 V Xenon Lamps

LED 2.5 V

For **ri-scope**[®] otoscope L2/L3/, **ri-derma**
Pack contains 1 unit

No.10626



LED 2.5 V

For **ri-scope**[®] ophthalmoscope L1/L2/L3
Pack contains 1 unit

No.10624



LED 3.5 V

For **ri-scope**[®] ophthalmoscope L1/L2/L3
Pack contains 1 unit

No.10627



LED 3.5 V

For **ri-scope**[®] otoscope L2/L3, **ri-derma**,
Light conductor, nasal speculum and tongue blade
holder. Pack contains 1 unit

No.10625



XL 3.5 V xenon lamp

For **ri-scope**[®] otoscope L1
Pack contains 6 units

No.10487



XL 3.5 V xenon lamp

For **ri-scope**[®] F.O. otoscope L2/L3,
ri-derma, Light conductor, nasal speculum
and tongue blade holder. Pack contains 6 units

No.10607



XL 3.5 V xenon lamp

For **ri-scope**[®] ophthalmoscope L1/L2/L3,
ri-derma. Pack contains 6 units

No.10608



XL 3.5 V xenon lamp

For **ri-scope**[®] operation otoscope human
Pack contains 6 units

No.10609



XL 3.5 V xenon lamp

For **ri-scope**[®] retinoscope slit lamp
Pack contains 6 units

No.10610



XL 3.5 V xenon lamp

For **ri-scope**[®] retinoscope spot lamp
Pack contains 6 units

No.10611



ri-scope® POWER SOURCES

The **Riester ri-scope®** line includes a large selection of high-quality and long-lasting power sources. The 230-V or 120-V instruments shown here are standard versions. If you require other voltages or specialized plugs for your country, we request that you make this information available to us when inquiring or ordering.

Handles

Handy **Riester**-handles with continuously adjustable **rheotronic®** for regulating light intensity are the basis for a safe examination. The well-conceived ergonomically plug and battery handles guarantee comfortable handling.

- Solid metal handles, black chrome-plated.
- Practical bayonet fitting for quickly switching instrument heads.
- Batteries are easy to replace at the base of the handle.
- For 3.5 V and 2.5 V **ri-scope®** and **ri-derma** instrument heads.

for alkaline battery,
for Li-ion battery
No. 10670

Battery handles Type C

- Handle diameter: 28 mm.
- Easy to charge with new plug-in charger or **ri-charger®L**
- With **rheotronic®**
- Without batteries

Batteries

Alkaline battery Type C (2 pieces)	No. 10686	2.5 V
Li-ion battery ri-accu® L	No. 10691	3.5 V
Li-ion battery ri-accu® L for plug-in charger	No. 10694	3.5 V



for alkaline battery,
for Li-ion battery
No. 10642

Battery handles Type AA

- Handle diameter: 19 mm
- Easy to charge in the **ri-charger®L** base
- With **rheotronic®**
- Without batteries

Batteries

Alkaline battery Type C (4 pieces)	No. 10685	2.5 V
Li-ion battery ri-accu® L	No. 10690	3.5 V



ri-scope® L

HANDLES

CHARGING BASES

ri-charger®L is the perfect charging base for all rechargeable handles, Type C/AA.

- Table or wall model
- Practical storage container for two replacement lamps and ear specula.
- Charging status displayed on the device:
Yellow: charging in progress.
Green: charging completed.

No. 10705 230 V

No. 10706 120 V

ri-charger®L

complete, with wall holder

- for all rechargeable handles with Li-Ion batteries 3.5 V (10690+10691)



Plug-in charger

- Plug-in charger for 3.5 V Li-ion rechargeable batteries .
- Wide-range plug-in charger (120 V – 240 V).
- Large selection of different power plugs on request.
- Also available with 3.5 V **ri-accu® L** rechargeable Li-ion battery included.
- Latest charging technology (less than 3 hours charging time).
- Up to 9 hrs operating time (LED) when fully charged.

No. 10707

Plug-in charger FOR Li-Ion rech. battery 3.5 V **ri-accu® L** (10694)
for battery handle type C, with EU-plug

No. 10708

Plug-in charger WITH Li-Ion rech. battery 3.5 V **ri-accu® L** (10694)
for battery handle type C, with EU-plug



ri-scope® L
CHARGING BASES

ri-former® THE MODULAR DIAGNOSTIC SYSTEM



ri-former® LED – the modular diagnostic system by Riester – optimal flexibility for hospitals and medical practices.

The diagnostic station modules can be combined individually to suit the requirements and location. Thanks to its innovative design it is variably extendable to the right and the left. The basic **ri-former®** module is available with one handle and can be supplemented with up to 4 more handle modules. The advantages of the **ri-former®** system can be seen in its versatile combination of options. With its centralized electrical power supply, the **ri-former®** offers the reliability required for the hectic day-to-day atmosphere of hospitals and medical practices. This guarantees cost savings and eliminates the need for batteries and rechargeable batteries, which is good for the environment.

Now also available with mobile stand or as an anesthesia model for fixation on rail systems.

- Blood pressure options
 - Fully automated clinical-grade blood pressure monitor (**ri-medic**)
 - Clock aneroid (**big ben**®)
- Thermometry options
 - Predictive probe thermometer (RPT-100)
 - Infra-red tympanic thermometer (**ri-thermo**®N)
- LED illumination for otoscopes and 3.5 V xenon illumination for ophthalmological instruments supply daylight conditions.
- The handles automatically switch on or off when removing or replacing them in the handle unit; this saves energy and increases the service life of the lamps.
- Non-slip, ergonomically designed handles with **rheotronic**: the handle enables continuously adjustable brightness as well as manual switching on and off.
- Developed and manufactured in Germany.

For **ri-former®** instrument heads with anti-theft device option, please see pages 6, 11 – 15. For all other options, please see separate **ri-former®** brochure.



ri-scope® L
WALL DIAGNOSTIC STATION

ri-scope® SETS



Instrument sets for E.N.T., ophthalmoscopy/retinoscopy and dermatology. The basic sets are delivered without batteries, **ri-accu®L** / **ri-charger®L** / plug-in charger. These accessories must be ordered separately. Due to the variety of possible instrument combinations, we show only a portion of all the instrument options in set form. We are happy to provide information on individualized product combinations upon request

- Both 2.5V and 3.5V instruments are equipped with either XL xenon lamps or LEDs.
- All sets are supplied in a deluxe hard case with safety catches.
- Easy replacement of instrument heads thanks to bayonet fitting.

ri-scope® L otoscope

- Tubes with 4 black, reusable ear specula sizes 2 - 5 mm and each with 3 black 2.5-mm (L1/L2) or 2-mm (L3) and 4-mm disposable ear specula.
- Operation lens with 4-fold magnification included only in L3.
- Deluxe hard case with safety catch.
- One spare lamp, for Xenon sets only.

Battery handle, Type AA with rheotronic®

For 2 alkaline batteries Type AA

No. 3705 L1 XL 2.5 V

No. 3706 L2 XL 2.5 V

No. 3708 L2 LED 2.5 V

No. 3709 L3 LED 2.5 V

For **ri-accu® L**

No. 3707-550 L1 XL 3.5 V

No. 3708-550 L2 LED 3.5 V

No. 3709-550 L3 LED 3.5 V

Battery handle, Type C with rheotronic®

For 2 alkaline batteries Type C

No. 3700 L1 XL 2.5 V

No. 3716 L2 XL 2.5 V

No. 3701 L3 XL 2.5 V

No. 3703 L2 LED 2.5 V

No. 3704 L3 LED 2.5 V

For **ri-accu® L**

No. 3702-550 L1 XL 3.5 V

No. 3703-550 L2 LED 3.5 V

No. 3704-550 L3 LED 3.5 V



ri-scope® L

SETS

ri-scope® L Ophthalmoscopes

- Deluxe hard case with safety catch.
- Separate magnifying glass with 5-fold magnification.
- One spare lamp, for Xenon sets only.



Battery handle, Type AA with rheotronic®

For 2 alkaline batteries Type AA
No. 3727 L1 XL 2.5 V

For ri-accu® L
No. 3728-550 L1 XL 3.5 V
No. 3814-203 L2 LED 3.5 V
No. 3815-203 L3 LED 3.5 V

Battery handle, Type C with rheotronic®

For 2 alkaline batteries Type C
No. 3722 L1 XL 2.5 V
No. 3723 L2 XL 2.5 V

For ri-accu® L
No. 3724-550 L1 XL 3.5 V
No. 3811-203 L2 LED 3.5 V
No. 3812-203 L3 LED 3.5 V

ri-scope® L otoscope/ophthalmoscope

- Tubes with 4 black, re-usable ear specula sizes 2 - 5 mm and each with 3 black 2.5-mm (L1/L2) or 2-mm (L3) and 4-mm disposable ear specula.
- Operation lens with 4-fold magnification available only with L3.
- Deluxe hard case with safety catch.
- Two spare lamps, for Xenon sets only.



Battery handle, Type AA with rheotronic®

For 2 alkaline batteries Type AA
No. 3747
L2 Oto./L1 Oph. XL 2.5 V
No. 3748-203
L2 Oto./L1 Oph. LED 2.5 V

For ri-accu® L
No. 3818-203
L2 Oto./L1 Oph. LED 3.5 V

Battery handle, Type C with rheotronic®

For 2 alkaline batteries Type C
No. 3743
L1 XL 2.5 V
No. 3745
L3 Oto./L2 Oph. XL 2.5 V
No. 3746-203
L3 Oto./L2 Oph. LED 2.5 V

For ri-accu® L
No. 3744-550
L1 XL 3.5 V
No. 3817-203
L3 Oto./L2 Oph. LED 3.5 V

ri-scope® L

SETS

ri-scope® E.N.T.

ri-scope® F.O. otoscope, nasal speculum and F.O. tongue blade holder

- Replacement bulb for **ri-scope®** F.O. otoscope, F.O. nasal speculum and F.O. tongue blade holder
- Tubes with 4 black, re-usable ear specula sizes 2 - 5 mm and each with 3 black 2.5-mm (L1/L2) or 2-mm (L3) and 4-mm disposable ear specula.
- Operation lens with 4-fold magnification included only with L3.
- Deluxe hard case with safety catch.
- One spare lamp, for Xenon sets only.

Battery handle, Type C with rheotronic®

For 2 alkaline batteries Type C

No. 3759 L3 XL 2.5 V

No. 3760 L3 LED 2.5 V

For **ri-accu®** L

No. 3760-550 L3 XL 2.5 V



ri-scope® praktikant

ri-scope® F.O. otoscope, F.O. nasal speculum, F.O. tongue blade holder and F.O. bent-arm illuminator

- Tubes with 4 black, re-usable ear specula sizes 2 - 5 mm and each with 3 black 2.5-mm (L1/L2) or 2-mm (L3) and 4-mm disposable ear specula.
- Operation lens with 4-fold magnification included only with L3.
- Two laryngeal mirrors No. 3 and No. 4.
- Deluxe hard case with safety catch.
- One spare lamp, for Xenon sets only.

Battery handle, Type C with rheotronic®

For 2 alkaline batteries Type C

No. 3765 L3 XL 2.5 V

No. 3766 L3 LED 2.5 V

For **ri-accu®** L

No. 3766-550 L3 LED 3.5 V



ri-scope® L

SETS

ri-scope® perfect

ri-scope® F.O. otoscope, ophthalmoscope and F.O. tongue blade holder

- Replacement bulb for **ri-scope®** F.O. otoscope, F.O. tongue blade holder.
- Replacement bulb for **ri-scope®** ophthalmoscope.
- Tubes with 4 black, re-usable ear specula sizes 2 - 5 mm and each with 3 black 2.5-mm (L1/L2) or 2-mm (L3) and 4-mm disposable ear specula.
- Operation lens with 4-fold magnification included only with L3.
- Deluxe hard case with safety catch.
- Two spare lamps, for Xenon sets only.



Battery handle, Type C with rheotronic®

For 2 alkaline batteries Type C

No. 3753 L3 Oto./L2 Oph. XL 2.5 V

No. 3754 L3 Oto./L2 Oph. LED 2.5 V

For **ri-accu®**L

No. 3819-203 L3 Oto./L2 Oph. LED 3.5 V

No. 3754-550 L3 Oto./L2 Oph. LED/XL 3.5 V

ri-scope® de luxe

ri-scope® F.O. otoscope, ophthalmoscope, F.O. nasal speculum, F.O. tongue blade holder and F.O. bent-arm illuminator

- Tubes with 4 black, re-usable ear specula sizes 2 - 5 mm and each with 3 black 2.5-mm (L1/L2) or 2-mm (L3) and 4-mm disposable ear specula.
- Two laryngeal mirrors No. 3 and No. 4.
- Deluxe hard case with safety catch.
- Two spare lamps, for Xenon sets only.



Battery handle, Type C with rheotronic®

For 2 alkaline batteries Type C

No. 3771 L3 Oto./L2 Oph. XL 2.5 V

No. 3772 L3 Oto./L2 Oph. LED 2.5 V

For **ri-accu®**L

No. 3820-203 L3 Oto./L2 Oph. LED 3.5 V

No. 3772-550 L3 Oto./L2 Oph. LED/XL 3.5 V

ri-scope® L

SETS

ri-scope® slit/spot retinoscope

- Two fixation cards for dynamic retinoscopy.
- Deluxe hard case with safety catch.
- One spare lamp.



Battery handle, Type C with rheotronic®

For 2 alkaline batteries Type C

No. 3410 Slit HL 2.5 V

No. 3430 Spot HL 2.5 V

For ri-accu® L

No. 3782-550 Slit XL 3.5 V

No. 3787-550 Spot XL 3.5 V

ri-vision with spot retinoscope

ri-scope® Retinoscope with spot lamp and ophthalmoscope L2

- Two fixation cards for dynamic retinoscopy.
- Two spare lamps.



Battery handle, Type C with rheotronic®

For 2 alkaline batteries Type C

No. 3799 HL 2.5 V

For **ri-accu®** L

No. 3801-550 XL 3.5 V

ri-scope® L

SETS

ri-derma

- Two sterilizable contact plates, with and without scaling.
- Deluxe hard case with safety catch.
- One spare lamp, for Xenon sets only.

Battery handle, Type C with rheotronic®

For 2 alkaline batteries Type C

No. 3390 XL 2.5 V

No. 3777 LED 2.5 V

For ri-accu® L

No. 3777-550 LED 3.5 V

