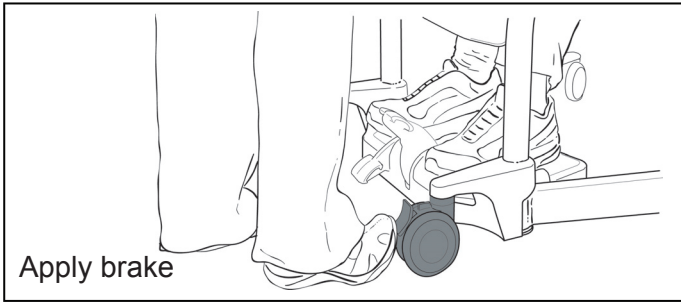
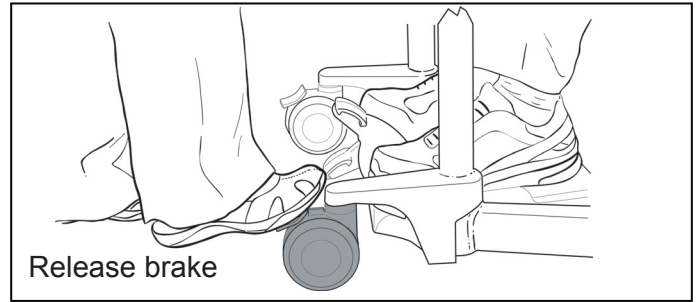


Apply and release brake

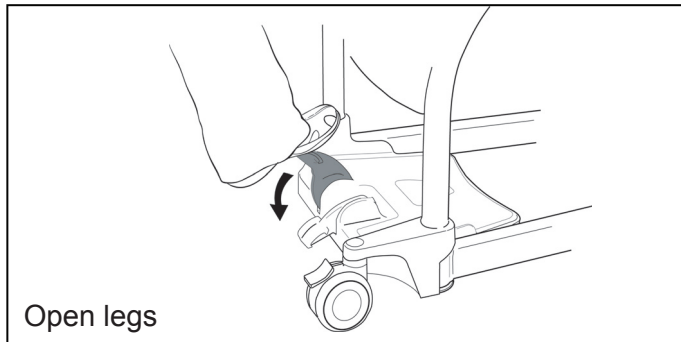


Apply brake

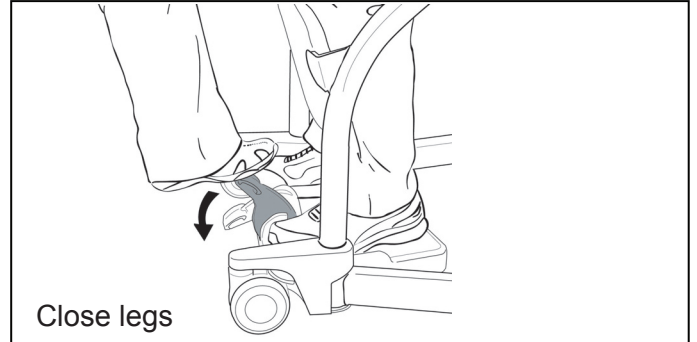


Release brake

Open and close legs

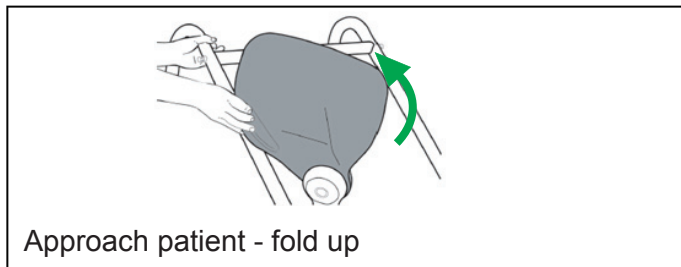


Open legs

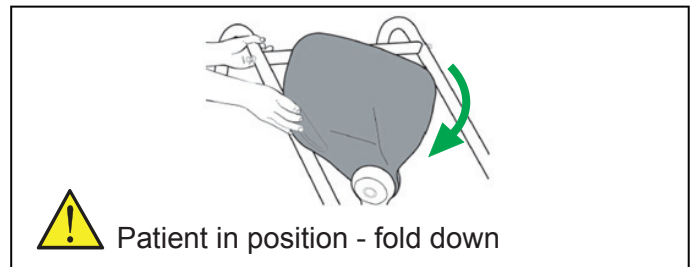



Close legs

Pivot cushions

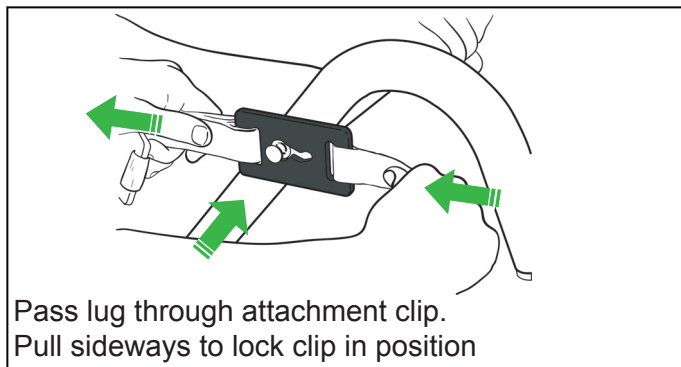


Approach patient - fold up

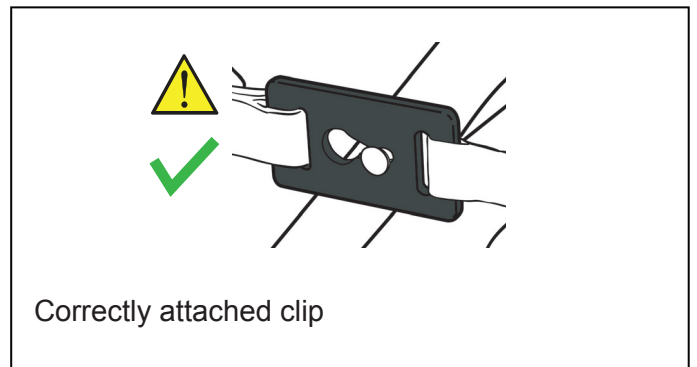


 Patient in position - fold down

Sling attachment lugs



Pass lug through attachment clip.
Pull sideways to lock clip in position



  Correctly attached clip

Cleaning and disinfection

Wipe it down with a damp cloth using warm water and a disinfectant cleaner.

Disinfectant wipes, impregnated with a 70 % v/v solution of isopropyl alcohol, can also be used.

Rub the lift vigorously when using wipes.

Do not use phenol, chlorine or any other type of solvent that may damage the finish.

