

Overview

The Drop End couch provides all the benefits of a seated chair position as well as a full-length surface for prone and supine positioning for various examination procedures. Ideal for GP Surgeries and Health Centres etc, this model can be equipped with optional leg supports for gynaecology procedures or phlebotomy armrests for blood taking procedures. The couch features electric or hydraulic height operation with manually adjustable backrest and foot section angles for easy patient positioning and comfort. The backrest can be instantly lowered to -15° head down to aid patient recovery in the event of fainting or light-headedness.

Benefits

- Lifetime frame & 5 year parts guarantee
- Option of electric or hydraulic height operation
- Adjustable angle backrest for supporting patient in sitting position
- Backrest can be instantly lowered to -15° to aid patient recovery
- Foot section is adjustable from 0 to -90° for ease of patient access
- Breathing hole and plug for prone treatments
- Safe working load of 250kgs (550lb / 39 stone)
- Retractable wheels provide easy movement and positioning
- Low patient transfer height of 52cm (20")
- Wide choice of options, width & accessories

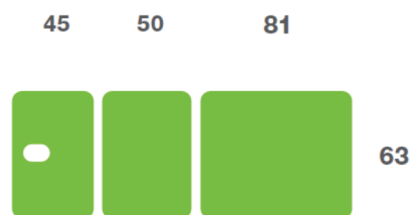
Length: 178cm (70") approx

Width: 63cm (25") approx

Height: 52cm - 101cm (20" - 40") approx



Upholstery Dimensions



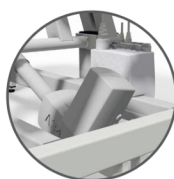
Options & Accessories



Phlebotomy Armrests



Foot Switch Operation



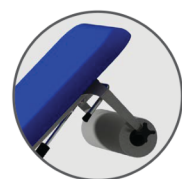
Battery Back-up



Gynaecology Leg Supports



Motorised Backrest

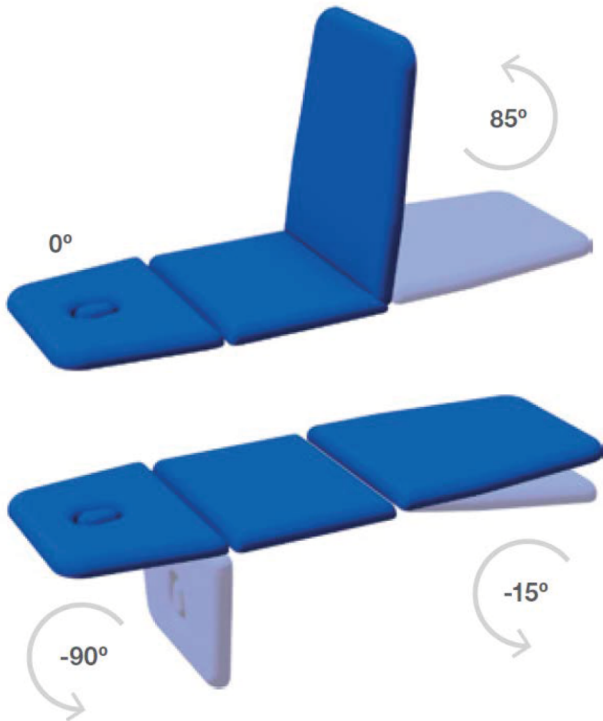


Paper Roll Holder

NHS Approved Supplier



Operational Parameters



Model 93DE - Electric Version

Model 93DH - Hydraulic Version

Standard Features

- Designed and manufactured in the UK
- Lifetime frame & 5 year parts guarantee
- 16 year average lifespan
- Electric or hydraulic operation
- Comfort foam
- Easy operation
- Low running costs
- Hardwearing anti-microbial vinyl
- Safe working load 250kg
- Retractable castors
- Hoist clearance 130mm
- Breathing hole

Technical Standards

- IP Rating - IPx4
- EEC Classification - MDD93/42/EEC Annex IX Class 1
- Electrical Standard - IEC601 Part 1 + 60601 P (EN)
- Vinyl Flame Retardant to CRIB 5 (BS 7176)
- Foam to BS 5852: Part 2: 1982, Ignition Source 5 [CRIB 5]
- CE Marked
- Externally audited to ISO9001:2015 by LRQA

Delivery Promise

- Delivery to UK mainland in just 7-10 working days
- Faster service may be available if required
- Overseas delivery 7-10 days plus shipping time

Upholstery Vinyl

- Flame retardant to BS 5852 Ignition Source 5 - CRIB 5 (BS 7176) Medium Hazard
- Independently tested to verify effectiveness at reducing the spread of MRSA, E.coli & other similar bacteria & fungi
- Rated at 500,000 Martindale rubs without damaging or marking the top layer, making it suitable for all high-traffic, heavy-duty areas
- Phthalate free
- Please note: If the upholstery colour is not specified, 'Almond' will be supplied

