

## Sani-Cloth Environment of Care - Information for Use (IFU)

**Sani-Cloth** wipes are disposable disinfection wipes for non-porous hard surfaces and non-invasive medical devices. **Sani-Cloth** wipes can be used to pre-clean or decontaminate medical devices prior to sterilisation or high level disinfection.

**Caution:** Avoid contact with eyes. If irritation occurs discontinue use, if irritation persists seek medical attention. Do not use on invasive medical devices. Follow the medical device manufacturers cleaning and disinfecting guidelines.

**Product Efficacy /Product Claims:** the time listed can be followed by (c) or (d). These letters indicate the test conditions used during the testing of the product.

- \* (c) : Clean Conditions
- \* (d) : Dirty Condition

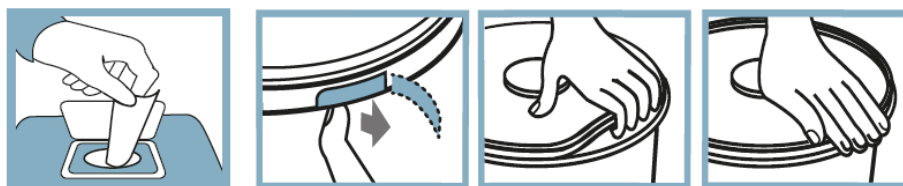
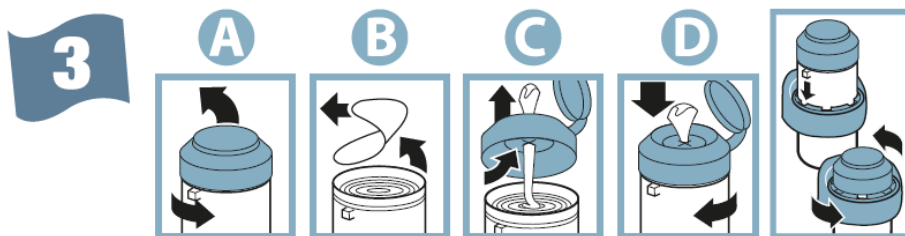
### How to Use the Wipe

**1** Before you start always wear the correct PPE. 

1. Check with your internal protocols to ensure that the correct PPE is used for the product, area and equipment you are about to clean and/or disinfect.

**2** Refer to label instructions and 'Use by' date. 

2. Check the expiry date.



3. Instructions are available for opening the canisters, flow wrap and bucket.

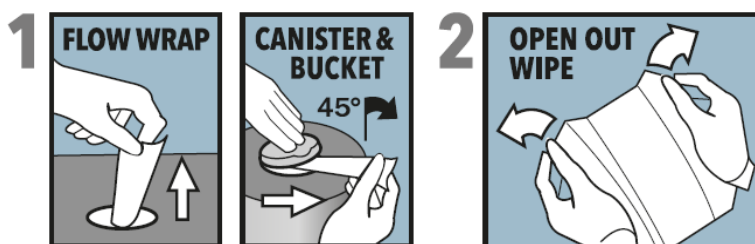
4

**VISIBLY CLEAN ? VISIBLY SOILED**

**Remove any visible soiling with first wipe before using additional wipes.**

4. Wipe use instructions - Remove any visible soiling with the first wipe, then use an additional wipe to disinfect.

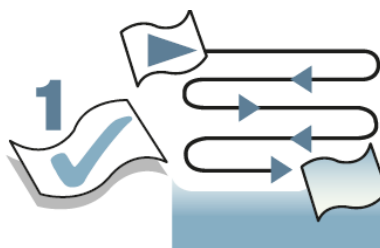
5



5. Remove only one wipe at a time. Open out the wipe.

6

**For 1 application use 1 wipe and follow this wipe direction.**



6. Wipe direction should be 'dirty to clean', top to bottom, taking care not to go over the same area twice to prevent any cross contamination.

7



**Recommended surface area coverage 1m square. Allow disinfectant to dry on surface- Contact time.**







**Dispose of used wipe into clinical waste.**

7. Contact Time & Drying Time

- a. One wipe covers an approximate surface area of one (1) metre square. Do not overuse the wipe, if it becomes dry or soiled discard and use another wipe to complete the area.
- b. Allow the disinfected area to air dry.
- c. Dispose of used wipes in the clinical waste bin.
- d. After use ensure the packaging lid is closed. Once empty, dispose of the packaging in the recycling bin, or according to local protocol

## Packaging Symbols

Here are some of the most common symbols you may find on PDI product packaging and their description:

Title of Symbol	Description of Symbol	Symbol (Colours may vary)
Do not flush	Do not flush	
Do not macerate	Do not macerate	
Consult instructions for use	Indicates the need for the user to consult the Instructions for use	
CE mark	CE mark Medical Device Directive Class IIa	
Do not re-use	Indicates a medical device (wipe) that is intended for one use, or for use on a single patient during a single procedure	
Manufacturer	Indicates the medical device manufacturer, as defined in EU directives 90/385/EEC, 93/42/EEC and 98/79/EC	
Expressed liquid	Stability and testing completed on liquid expressed from the wipe, rather than bulk liquid.	
PAO	Period after opening – the period of time the product can be used once the product has been opened.	
Wipe count	How many wipes are in the pack.	
High Density Polyethylene (HDPE)	HDPE 2 is a high density-to-strength ratio and is commonly recycled, and has the number "2" as its resin identification code.	

## **Authorised Representative in the European Community**



NEX MEDICAL ANTISEPTICS S.r.l.  
Via Per Arluno 37/39 20010 CASOREZZO ( MI ) Italy

### **FAQ's**

#### **What is contact time and what happens if the surface dries before the stated contact time on a Sani-Cloth product label?**

The contact time listed on the **Sani-Cloth** product label is the total amount of time that it takes to inactivate the microorganisms listed on the product label. This time is typically referred to in minutes, and should be communicated to staff members that are utilising the disinfectant. In certain geographies and also in settings where temperature, relative humidity, and air changes may vary, it is possible that the surface may not remain visibly wet for the designated contact time. Current industry guidance requires that the treated environmental surface or equipment remains wet for the contact time stated on product label. Additional wipes may be needed in order to comply with the industry guidance, however the overall contact time does not change.

While the current industry guidance requires the treated environmental surfaces to remain wet for the stated contact time, leading researchers in infection prevention offer an alternate view. In a commentary published in *Infection Control and Hospital Epidemiology* (March 2018, vol. 39, no. 3, pp 229-331), Dr. W.A. Rutala and Dr. D. J. Weber suggest that contact time and treatment time are mutually exclusive. They suggest that treatment time, irrelevant of wet time, should be followed by healthcare workers for wipes and sprays (except bleach products.) PDI will continue to monitor the science closely and provide their customers with the latest information.

Following cleaning and disinfection the surface should be allowed to fully air dry.

Medguard Professional Healthcare

Tel: +353 (0) 1 835 2411

Email: [sales@medguard.ie](mailto:sales@medguard.ie)

Fax: 01 969 5009

Website: [www.medguard.ie](http://www.medguard.ie)

Unit 6/7, Block 4, Ashbourne Business Park, Ashbourne, Co. Meath, A84 VK52