

Plinth 2000

Model 501D Divided Leg Tilt Table

Overview:

Lowering to just wheelchair height and featuring electric height and tilt, large toe braked castors, divided legs, adjustable harnesses and patient grab handles, this tilt table also has four button hand control permitting simultaneous control and fine adjustment of both height and tilt functions. Designed as a robust platform for a wide range of applications from rehabilitation through to examination.



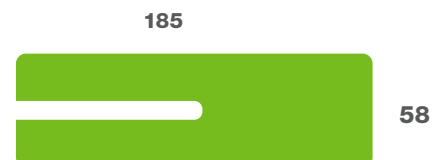
Standard Features

- UK Manufactured
- Lifetime frame & 5 year parts guarantee
- 16 year average lifespan
- Electric height & tilt operation
- Comfort foam
- Easy operation
- Low running costs
- Hardwearing anti-microbial vinyl
- Safe working load 160kg
- 100mm toe braked castors
- Hoist clearance 130mm
- Swing back patient grab handles
- Divided leg and pommel assembly
- Leg stabiliser pads
- Set of patient harnesses
- Standard patient foot board

Overall Dimensions

Length:	185cm (73") approx
Width:	76cm (30") approx
Height:	52cm - 97cm approx (20" - 38") approx

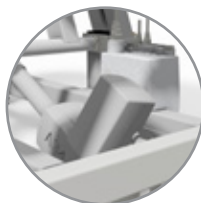
Upholstery Dimensions



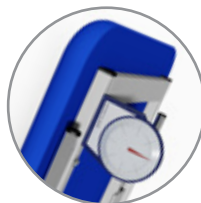
Recommended Options:



Divided Foot Board



Battery Back-up



Angle Indicator



Patient Table

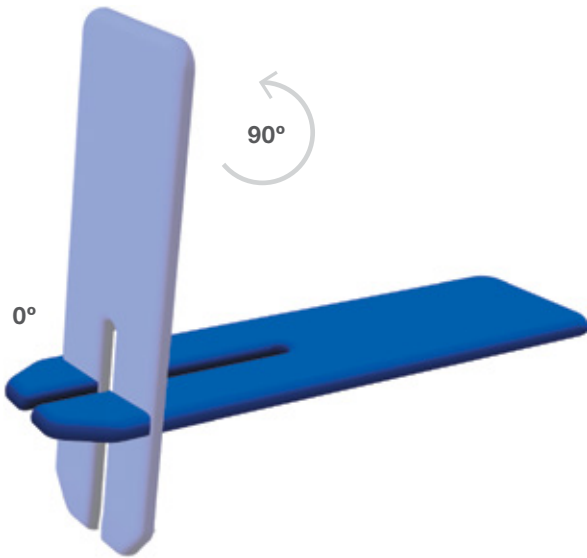


D Cushion



Tilting Patient Table

Operational Parameters



Model 501D - Electric version

For Your Peace of Mind

- Lifetime frame & 5 year parts guarantee (accidental damage to upholstery excluded)
- Optional extended warranty to 10 years
- Average lifespan of 16 years
- Designed and manufactured in-house in the United Kingdom
- CE marked
- Externally audited to ISO9001:2008 by LRQA

Standards

- IP Rating - IPx4
- EEC Classification - MDD93/42/EEC Annex IX Class 1
- Electrical Standard - IEC601 Part 1 + 60601. P (EN)
- Vinyl Flame Retardant To CRIB 5 (BS7176 Including Foam)
- Foam To BS 5852: Part 2: 1982, Ignition Source 5 [CRIB 5]

Delivery Promise

- Delivery to UK mainland in just 7-10 working days
- Faster service maybe available if required

Upholstery Vinyl

- Flame retardant to CRIB 5
- Patented anti-microbial technology proven to inhibit the growth of E-Coli and MRSA
- Excellent levels of wear and longevity
- Fully washable and impermeable, to aid infection control
- Suitable for cleaning and disinfecting with dilute solutions of Hypochlorite (10,000ppm)
- Please note: Unless specified, beige will be supplied.

